

2024 EXHIBIT SPACE PRICING

Save with Early Sign Up!

NEW! PRIVATE MEETING ROOM WITH SELECTED BOOTH SPACES*

Available for Island and Non-Island Booths*

There are a selected number of 200 and 600 square foot booth spaces on the WMA floor plan that will offer an adjoining meeting space* (See Figures 1-5). The adjoining meeting space offers versatility, and the comfort of meeting with customers in a private setting during hall hours. *The adjoining meeting space and booth space is included in a special discounted package.* Other than those items included and listed below, any additional services or exhibitor needs are at the Exhibitor expense. Reference the Freeman Exhibitor Kit for placing orders and for other booth services. Tip: Inquire with Freeman about customizing your meeting space wall with your company ad or logo. *Reference the exhibit floor plan for designated booths and the Exhibitor Rules & Regulations, page 9, for more information.

10x20 Booth Space with 10x10 Hard Wall Meeting Room

Figure 1 – Booth Front View

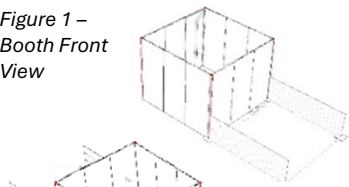


Figure 2 – Booth Back View with Entrance Door

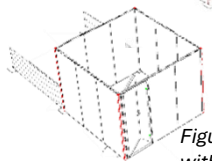


Figure 3- 100 sq. ft. Hard Wall Meeting Room



Booth Space Package Includes*:

- 200 sq. ft space – discounted \$29 sf.
- 10x10 Hard PVC Wall Meeting Room
- Booth & Meeting Room Carpet (200sf.)
- 1 Round Table
- 4 Black Diamond Armchairs
- 2 Complimentary Employee Registrations
- Wallpaper Company Logo added to booth on the online hall floor plan.
- Exhibitor Name & Booth Location Bolded in Program Guide

Package Price: \$ 10,500

20x30 Booth Space with 10x20 Hard Wall Meeting Room

Figure 4 – Booth Front View with Entrance Door

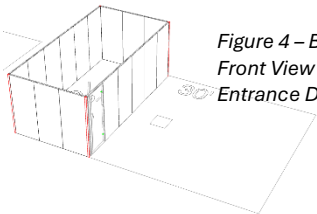
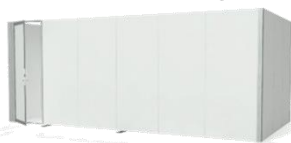


Figure 5 - 200 sq. ft. Hard Wall Meeting Room



Booth Space Package Includes*:

- 600 sq. ft space – discounted \$28 sf.
- 10x20 Hard PVC Wall Meeting Room
- Carpet (200sf)
- 1 Conference Table
- 6 Black Diamond Armchairs
- 4 Complimentary Employee Registrations
- Wallpaper Company Logo added to booth on the online hall floor plan.
- Exhibitor Name & Booth Location Bolded in Program Guide

Package Price: \$ 23,900

*No revisions to the structured "meeting room" will be accepted. The meeting room will be constructed "as is". *

February – May 31, 2024

Booth Sq. Ft.	Rate per Sq. Ft.
0 – 399 sq. ft.	\$30.00
400-600 sq. ft.	\$29.50

June 1 – July 31, 2024

Booth Sq. Ft.	Rate per Sq. Ft.
0 – 399 sq. ft.	\$31.00
400-600 sq. ft.	\$30.50

August 1 – October 6, 2024

Booth Sq. Ft.	Rate per Sq. Ft.
0 – 399 sq. ft.	\$32.00
400-600 sq. ft.	\$31.50

2024 Non-Member Pricing

Booth Sq. Ft.	Rate per Sq. Ft.
0 – 399 sq. ft.	\$50.00
400-600 sq. ft.	\$49.50

WMA Sponsorship Opportunities
Build Brand Recognition
[Click Here for Sponsorship](#)